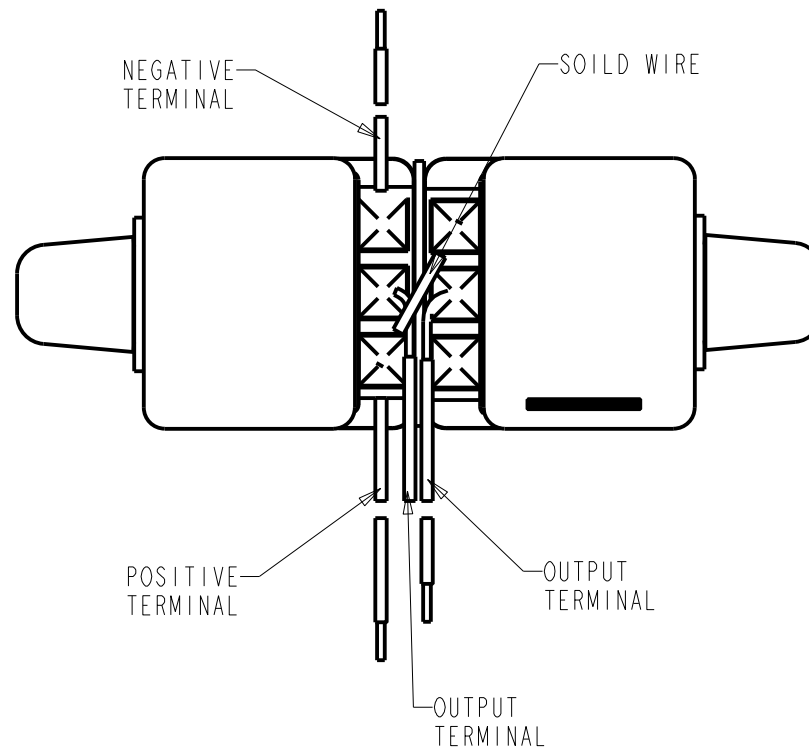


BEM-26783-P105  
SHT 1.1



**RED CONTROLLED**

DIMENSIONS IN MILLIMETERS [INCHES]

**KNOWLES ELECTRONICS**  
ITASCA, ILLINOIS U.S.A.

Revision	C.O. #	Implementation Date	RELEASE LEVEL	REVISION
			Active	A
A	C40100678	6-12-11		
SCALE: 4:1			DR. BY KL	DATE 6-13-11
DO NOT SCALE DRAWING			CK. BY GJP	DATE 6-15-11
TITLE: MICROPHONE		BEM-26783-P105	APP. BY GJP	DATE 6-15-11
OUTLINE DRAWING		SHT 1.1	KE111ASIZE.FRM Rev: B	

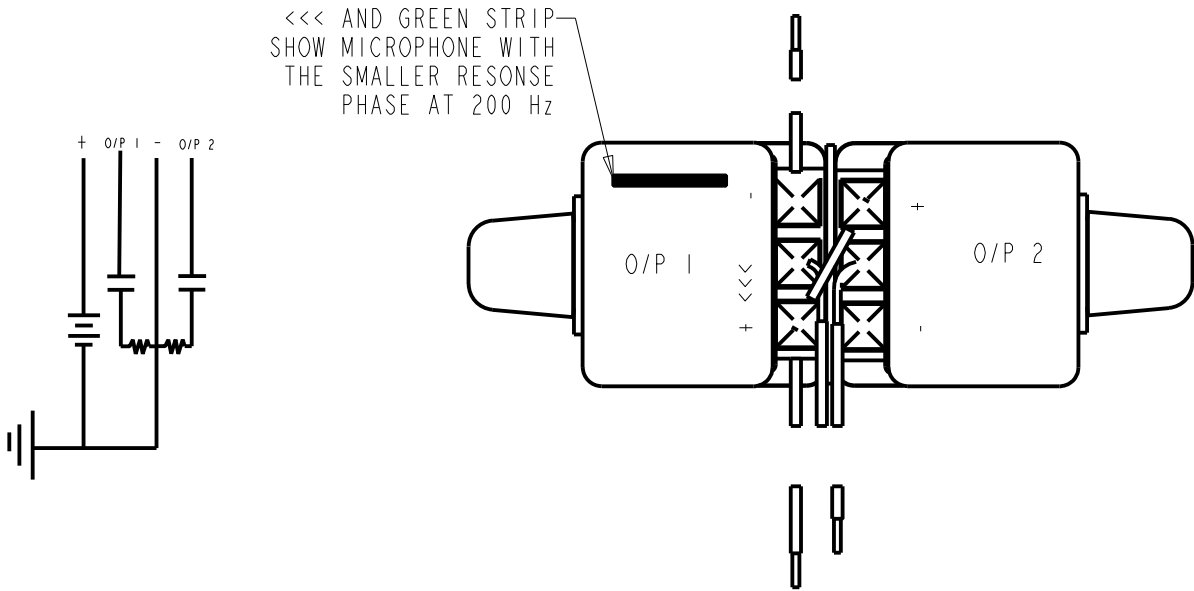
PAIR	CONSIST OF:
BEM-26783-P105	(2) BEM-26782-D51

BOTH MICROPHONES OF THE PAIR ARE TESTED TO BEM-26782-D51 2.1 SHEET AND THEN MATCHED TO THE OTHER MICROPHONE USING THE SPECIFICATIONS AND CONDITIONS BELOW:

FREQUENCY	TEST TYPE	RANGE OF DEVIATION BETWEEN MICROPHONES	UNITS
500 Hz	SENSITIVITY	1.0 MAX.	dBV
200 Hz	PHASE	1.5 MAX.	DEGREES
2000 Hz	SENSITIVITY	1.0 MAX.	dBV
PEAK	SENSITIVITY (RE 1kHz SENSITIVITY)	1.5 MAX.	dBV
PEAK	FREQUENCY	250 MAX.	Hz

NOTES:

- 1. DC SUPPLY VOLTAGE .930 VOLTS.
- 2. TESTED WITH 26 kΩ LOAD AND 1μF CAPACITOR COUPLED TO THE OUTPUT. SEE SCHEMATIC.
- 3. SENSITIVITY AND PHASE VALUES INDICATED ARE VALID AT 50% RH.
- 4. LOADS AND CAPACITANCE FROM NOTE 2 MUST BE REMOVED PRIOR TO TESTING FOR IMPEDANCE.



RED CONTROLLED

Revision	C.O. #	Implementation Date	RELEASE LEVEL	REVISION
			Active	A
A	C40100678	6-12-11		
WHEN TEST LIMITS ARE USED TO ESTABLISH INCOMING INSPECTION ACCEPTANCE/REJECTION CRITERIA, CORRELATION OF TEST EQUIPMENT WITH KNOWLES IS ALSO REQUIRED FOR ELIMINATION OF EQUIPMENT AND TEST METHOD VARIATION			DR. BY KL	DATE 6-13-11
TITLE: MICROPHONE PERFORMANCE SPECIFICATION			CK. BY GJP	DATE 6-15-11
			APP. BY GJP	DATE 6-15-11

KNOWLES ELECTRONICS  
ITASCA, ILLINOIS U.S.A.

BEM-26783-P105  
SHT 2.1